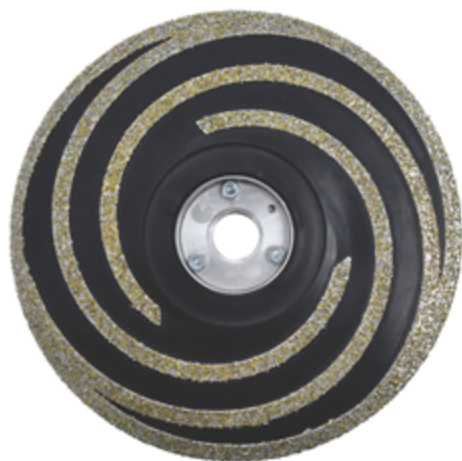




ITEM# 49-93-6996



5" Diamond Grinding Wheel Coarse

Milwaukee Diamond Grinding Wheels are designed to the highest standards, only using quality diamonds.

Milwaukee's diamond grinding wheel is contains a flexible rubber backer, reducing vibration. This product can be used in concrete, mortar, steel, marble as well as glass & tile. Contains a 5/8"-11 adapter for use on many grinders. Available in fine, medium, and coarse grit.

INCLUDES:

[\(1\) 5" Diamond Grinding Wheel Coarse \(49-93-6996\)](#)

FEATURES:

- Rubber backing reduces vibration
- Designed to be used Wet or Dry
- 5/8"-11 thread for use with standard grinder
- Coarse Grit

PRODUCT SPECIFICATIONS:

Thread	5/8"-11
Size	5"

Grit	Coarse
------	--------