

SUPER GRIP DISPOSABLE GLOVES

FIT, DEXTERITY, TRACTION GRIP, AMBIDEXTROUS

- ◆ Embossed fish scale pattern on the outside and inside of the glove for ergonomic traction and exceptional wet grip on outside with reduced hand slippage on inside
- ◆ Chemical resistant 100% 6 mil nitrile
- ◆ Beaded cuff for secure fit around the arm
- ◆ CE level 5 dexterity for superior fit, feel, and comfort
- ◆ Powder Free
- ◆ 9.5" Length
- ◆ Ambidextrous fit for less waste
- ◆ Industrial use, great for the food processing/service industry



Technical Data

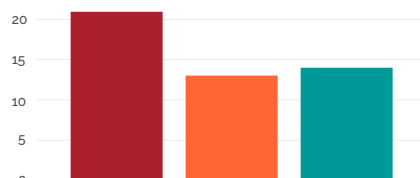
Material	100 % Nitrile
Standards	EN374-1:2003 - Chemical Protection EN374-2:2003 - Micro Organism Protection EN420 - Level 5 Dexterity EN1186-3 - Migration Testing for Food Contact Materials FFDCA - Meets FFDCA Requirements for Food Contact
Cuff Closure	Beaded Cuff
Mil Thickness	6 Mil
Colors	Black, Orange
Sizes	S-XXL
Packaging	100 gloves/box 20 boxes/carton

Available in

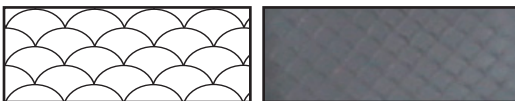
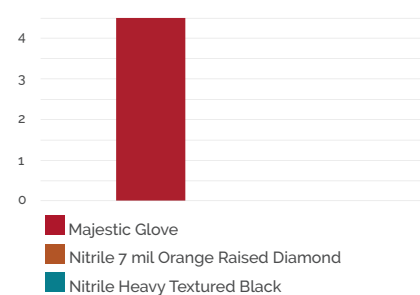
3276AK	Black
3276AO	Orange

Performance Comparison

Pinch Grip Test with Motor Oil (1.0 kgf Load)



Whole Hand Grip Test with Motor Oil (6.5 kgf Load)



Embossed fish scale pattern provides exceptional grip on the outside and inside of the glove

Reliability in Safety.

Majestic Glove
2510 W Casino Rd
Everett, WA 98204

P: 800-367-4568
F: 425-407-1030
orders@majesticlove.com

majesticlove.com

