

TOOL STORAGE

TOOLS COOT™ TOOL CART For CAT/BT & HSK Taper Tools

Quality and mobility at an affordable price! Durable nylon inserts on both shelves help protect tool holders. Lower shelf angled for quick, easy tool access from either side. Solid, interlocking side panel construction for maximum strength and stability.

Dimensions: 18" W x 35 1/4" L x 35" H
Weight: 75 lbs.



**CAT-30, CAT-35
& CAT-45 Toolscoots
Also Available!**



Tool Size	Total No. of Holes	Part Number	Price Each
40 taper	48	HU-13940	\$479.22
50 taper	36	HU-13950	\$479.22
HSK 63A	48	HU-13970	\$539.00
HSK 100A	36	HU-13980	\$539.00

CHUCK JAWS
LATHE WORKHOLDING

MACHINE VISES
VISE JAWS

RETENTION KNOBS
ER, DA, TG COLLETS

TOOLHOLDERS
TAP HOLDERS

INDEXABLE DRILLS
TURNING & BORING

ENDMILLS, DRILLS
TAPS & REAMERS

ABRASIVES
MEASURING TOOLS

MRO & SAFETY
FLAT STOCK/DRILL ROD

SUPERSCOOT TOOLCART



- Constructed of 12 gauge steel
- Increased storage capacity
- Rolling casters load rated to 1600 lbs
- Baked on gold vein powder coating
- Phosphate pretreatment undercoating for additional toughness
- Outrigger design for improved stability and easier maneuverability

Dimensions: 45-1/4" width (includes handle & end tray) x 17-1/2" D x 40" high
Weight: 132lbs

Tool Size	Total No. of Holes	Holes per Shelf	Part Number	Price Each
40 taper	90	45	HU-23940	\$642.88
50 taper	52	26	HU-23950	\$642.88
HSK 63A	90	45	HU-23970	\$749.70
HSK 100A	78	36	HU-23980	\$749.70



TOOL TOWER For CAT/BT & HSK Taper Tools



Provides an economical, free standing storage unit for toolholders. The Tooltower comes with 3 shelves and can be stacked to form a 5 or 6 shelf tower, providing a cost effective way to store and protect your tools in a compact space. Sturdy 16 gauge steel construction. Molded inserts protect each tool holder.

Tool Size	Total No. of Holes	Part Number	Price Each
40 taper	72	HU-13840	\$391.02
50 taper	54	HU-13850	\$391.02
63A HSK	72	HU-13870	\$450.80
100A HSK	54	HU-13880	\$450.80

SPEEDYSCOOT TOOLCART



- Only 15" wide, lets you easily move industrial tooling through narrow spaces
- Heavy duty construction
- Durable nylon inserts help prevent tooling damage
- Solid side panel for maximum strength
- Heavy duty 4" x 1-1/2" casters load rated at 1000 lbs.
- All steel infrared-baked epoxy finish
- **Dimensions:** 15" W x 35-1/4" L x 35" H



Tool Size	Capacity	Part Number	Price
CAT/BT/NMTB 40	24	HU-33940	\$367.50
CAT/BT/NMTB 50 taper	15	HU-33950	\$367.50
HSK 63A	24	HU-33970	\$411.60
HSK 100A	15	HU-33980	\$411.60



TOOLS COOT™ TREE



- **Dimensions:** 57" H x 28-1/2" W x 28" D
- 5 Adjustable shelves for 40 taper tools
- Each shelf holds 18 toolholders (90 total)
- Shelves can be set flat or at a 20° angle
- 1 Utility shelf to hold collet racks and tools
- 70 Matching slot locations (35 per side) for maximum shelf adjustment
- Adjustable height handle
- 3 built-in top slots for spanner wrenches
- Rugged unibody arched design and made from 14-gauge CRS.
- Heavy duty 5" casters rated to 1200 lbs.

Tool Size	Cap.	Part Number	Price
CAT/BT 40 taper	90	HU-55940	\$899.00

CNC TOOL TOTE RACKS



- Built-in end handles for comfortable carrying
- Bench mount, hand carry, or mount on top
- Made of heavy gauge steel
- Nylon inserts help protect tooling
- Painted texture black powder coating

Tool Size	Cap.	Part Number	Price
40 Taper Tools	6	HU-14780	\$68.00
50 Taper Tools	5	HU-14790	\$68.00



TRISCOOT

- Only 15" wide, lets you easily move industrial tooling through narrow spaces
- Heavy duty construction
- Durable nylon inserts help prevent tooling damage
- Solid side panel for maximum strength
- Heavy duty 4" x 1-1/2" casters load rated at 1000 lbs.
- All steel infrared-baked epoxy finish
- **Dimensions:** 15" W x 35-1/4" L x 35" H

Tool Size	Cap.	Part Number	Price
BT, CAT, NMTB 40 Taper	72	HU-13409	\$587.02
BT, CAT, NMTB 50 Taper	54	HU-13509	\$587.02



Call Us Today For All Of Your Machine Tool Needs!

CNC, HSK AND COLLET PLATFORM



Conveniently holds your CNC tools or collets at the ready, for quick access. Angled platform for 40 & 50 taper tools and 5C or R8 collets.

Dimensions:
27-1/4" W x 20-1/4" D x 11" H
at rear of rack.



Tool Size	No. of Holes	Part Number	Price
40 taper	24	HU-14840	\$140.00
50 taper	18	HU-14850	\$140.00
5C collets	48	HU-14856	\$170.00

STURDY PLASTIC HOLDING TRAYS

For CAT or BT Taper Toolholders

- Sturdy plastic holding tray can be used with CAT or BT Holders
- Available for 30 or 40 taper tool holders.
- An inexpensive way to organize your tool holders.



Taper Size	No. of Holes	Part Number	Price Each
CAT/BT30	10	TRAY30-10	\$32.00
CAT/BT40	10	TRAY40-10	\$29.95

LATHE CHUCKS
LIVE CENTERS

VICE JAWS
VICE ACCESSORIES

STRAIGHT SHANK
COLLET HOLDERS

TAP HOLDERS
DRILL CHUCKS

CARBIDE INSERTS
THREADING/GROOVING

CUTTING TOOLS
MACHINERY

PRECISION TOOLS
DEBURRING

COOLANT/FLUIDS
TOOL STORAGE

3J & 16C COLLET RACKS



FEATURES:

- Protects and organizes your valuable collets
- Sturdy steel construction
- Available for 3J & 16C collets
- 25 holes

Description	No. Of Holes	Part Number	Price Each
3J Collet Tray	25	TRAY-125-3J	\$65.00
16C Collet Tray	25	TRAY-125-16C	\$65.00

COLLET RACKS FOR ER/RD/DR/DA & TG COLLETS



Protect, store and organize your valuable collets! Made of heavy 14 gauge steel finished with durable epoxy, powder paint. All racks conveniently fit in the Toolscot and Tool Tower storage trays and are mountable on bench top.

Collet Type	No. of Holes	Hole Size	Part Number	Price
ER 11	49	27/64"	HU-14800	\$51.50
ER 16	49	39/64"	HU-14801	
ER 20	36	49/64"	HU-14802	
ER 25	48	61/64"	HU-14803	
ER 32	40	1 13/64"	HU-14804	
ER 40	27	1 1/2"	HU-14805	\$51.50
ER 50	21	2"	HU-14806	
DA300	49	5/16"	HU-14810	\$51.50
DA200	49	15/32"	HU-14811	
DA180	48	29/32"	HU-14812	
DA100	36	43/64"	HU-14813	
TG75	40	1 1/32"	HU-14820	\$51.50
TG100	27	1 5/16"	HU-14821	
TG150	21	1 59/64"	HU-14822	

5C/R8 COLLET RACKS



FEATURES:

- Now more holes per rack
- No More Ruined Collets
- Made From Hi-impact Plastic
- Made in the USA

Description	No. of Holes	Part Number	Price Each
5C Collet Rack	76	SIE-5C-76	\$31.89
R8 Collet Rack	52	SIE-R8-52	\$30.67

5C/R8 COLLET RACKS



Made of heavy gauge steel, this collet rack is angled for visibility and easier selection of stored collets and is mountable on bench tops. Tough, solvent free, epoxy finish Ecolo-Clad for long lasting protection.

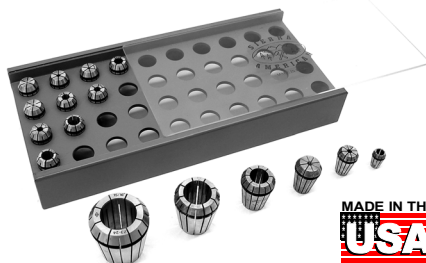
Mountable to milling machine!



Type	No. of Holes	Dimensions	Weight	Part Number	Price
5C	30	Top 9"W x 12"D	3 lbs.	HU-14600	\$36.00
R8	16	Top 5 1/4"W x 9"D	2 lbs.	HU-14625	\$36.00

COLLET TRAYS

- High impact plastic tray will not damage accurate locating surfaces
- Sliding see thru plastic cover
- Up to 40 collets per tray - holds a full set plus special & metric sizes
- Angled seat location to secure collet
- Made in USA
- ER Collets are located on pages 167-174



Protect & Organize Your Collets!



Collet Series	Collet Capacity	Part Number	Price Each
ER-11	40	SIE-SAER-11-40	\$37.07
ER-16	40	SIE-SAER-16-40	\$37.07
ER-20	40	SIE-SAER-20-40	\$40.28
ER-25	40	SIE-SAER-25-40	\$40.28
ER-32	40	SIE-SAER-32-40	\$41.56
ER-40	28	SIE-SAER-40-28	\$41.56

Call Us Or Visit Our Website For Our Complete Selection!

CUTTING TOOL STORAGE

MASTER DRILL DISPENSERS



Holds full packages (minimum of 12 pcs.) of jobber or screw machine length drills, fractional, letter and wire gauge sizes in one complete cabinet.

Dimensions:
26"W x 12"D x 12 1/2"H



Description	Part Number	Price
Master Drill Dispenser	HU-13175	\$475.00

"THE ORIGINAL" DRILL DISPENSER



Holds full packages of each size drill (minimum 12 pcs.). Once piece drawer slide for long useful life. Stackable for larger inventories.

Dimensions:
14 5/8"W x 7 3/8"D x 7 3/4"H



for Drill sizes	Part Number	Price
1/16" to 1/2" x 64ths jobber drills	HU-13000	\$87.00
#1 to #60 wire gage drills, jobbers length	HU-13025	\$110.00
A to Z jobber length drills	HU-13050	\$86.00

MASTER TAP DISPENSERS



Model HU-1385
Holds most common NC/NF sizes from 1/4" to 1/2". Holds metric from 2.5 mm to 30 mm. Holds machine screw size 2-56 thru 12-28 taper, plug, bottom and spiral. Extruded vinyl drawer dividers protect taps. Top Drawer has 20 compartments. Second drawer has 78 compartments. Third drawer has 21 compartments. Fourth Drawer has 13 compartments. Stackable for larger inventories. Lockable.



Dimensions:
26"W X 12"D X 12-1/2" H.

Description	Part Number	Price
Master Series Tap Cabinet	HU-13585	\$499.00

"THE ORIGINAL" TAP DISPENSER



New one piece drawer slide for long, useful life. Stackable- holds full packages (minimum) of each size.

Model HU-13500
1/4"-20NC 1/4"-28NF 5/16"-18NC 5/16"-24NF 3/8"-16NC 3/8"-24NF 7/16"-14NC 7/16"-20NF 1/2"-13NC 1/2"-20NF 9/16"-12NC 9/16"-18NF 5/8"-11NC 5/8"-18NF 3/4"-10NC 3/4"-16NF 7/8"-9NC 7/8"-14NF 1"-8NC 1"-14NF

Model HU-13550
Each size holds taper, plug, bottoming, and spiral point taps. 60 compartments. Holds machine screw sizes:
2-56 3-48 3-56 4-40 4-48 5-40 5-44 6-32 6-40 8-32 8-36 10-24 10-32 12-24 12-28



Description	Part Number	Price
1/4"-20 thru 1"-14	HU-13500	\$95.00
2-56 thru 12-28	HU-13550	\$118.00

MASTER REAMER CABINETS



Lockable and stackable.
Stores the following reamers:
1/8"-4ea., 0.1230 d/p, 0.1240 under, 0.1247 d/p, 0.1260 over, 3 ea. 3/16", 0.1855 D/P, 0.1865 under, 0.1870 d/p, 0.1885 over 3, ea. 1/4"-4 ea., 0.2480 d/p, 0.2490 under, 0.2495 d/p, 0.2510 over 3 ea. 5/16"-3 ea., 0.3105 d/p - 3 ea., 0.3115 under 2 ea., 0.3120 d/p-2 ea., 0.3135 over-2ea. 3/8"-4 ea., 0.3730 d/p, 0.3740 under, 0.3745 d/p, 0.3760 over 3 ea. 7/16, 0.4355 d/p, 0.4365 under, 0.4370 d/p, 0.4385 over 2 ea. 1/2"-4 ea., 0.4980 d/p-2 ea., 0.4990 under, 4995 d/p, 0.5010 over 3, ea.



Dimensions	Part Number	Price
26" W x 12" D x 9-5/16" H	HU-13400	\$425.00

SPACE SAVING REAMER CABINETS



There are 4 different models for reamer organization. These cabinets are ideal where compact space is a must. Decimal equivalents also listed.

Dimensions: (All Models)
14 5/8"W x 7 3/8"D x 7 3/4"H



For Reamer Sizes:	No. of Drawers	Part Number	Price
1/16" to 1/2"	4	HU-13410	\$115.00
A to Z	3	HU-13415	\$105.00
#1 to #60	5	HU-13420	\$125.00
Over/Under and dowel pin	3	HU-13430	\$105.00

INSERT DISPENSERS



Holds square, triangular, diamond and round inserts, with additional space for specials. Has 36 compartments to hold packages or loose inserts and is pre-labeled for insert shape. Includes a label set for your personalized marking of size, radius, grind and thickness. Lockable and stackable.

Dimensions: 26"W x 12"D x 12 1/2"H



Description	Part Number	Price
Dispenser for inserts	HU-13600	\$475.00

TAP AND DRILL DISPENSERS



Stores and organizes correct tap drill with corresponding size tap. Holds one dozen (minimum) of each size.
Dimensions: 14 5/8"W x 7 3/8"D x 7 3/4"H
Weight: 10 1/2 lbs.

Holds 6-32 Tap, #36 Drill, 8-32 Tap, #29 Drill, 10-24 Tap, #25 Drill, 10-32 Tap, #21 Drill, 1/4-20 Tap, #7 Drill, 1/4-28 Tap, #3 Drill, 5/16-18 Tap, F Drill, 5/16-24 Tap, I Drill, 3/8-16 Tap, 5/16 Drill, 3/8-24 Tap, Q Drill, 7/16-14 Tap, U Drill, 7/16-20 Tap, 25/64 Drill, 1/2-13 Tap, 27/64 Drill, 1/2-20 Tap, 29/64 Drill.



Description	Part Number	Price
Tap and drill dispenser	HU-13590	\$105.00

Call Us Today For All Of Your Machine Tool Needs!

CHUCK JAWS
LATHE WORKHOLDING

MACHINE VISES
VISE JAWS

RETENTION KNOBS
ER, DA, TG COLLETS

TOOLHOLDERS
TAP HOLDERS

INDEXABLE DRILLS
TURNING & BORING

ENDMILLS, DRILLS
TAPS & REAMERS

ABRASIVES
MEASURING TOOLS

MRO & SAFETY
FLAT STOCK/DRILL ROD

TAP INDEXES

Model HU-12575 holds 10 Fractional Sizes:

Coarse and Fine: 1/4"-20, 5/16"-18, 3/8"-16, 7/16"-14, 1/2"-13, 1/4"-28, 5/16"-24, 3/8"-24, 7/16"-20, 1/2"-20

Model HU-12550 holds 19 Machine Screw Sizes:

Fine and Coarse: 0-80, 1-72, 2-56, 3-48, 4-40, 5-40, 1-64, 2-64, 3-56, 4-48, 5-44, 6-32, 8-32, 10-24, 12-24, 6-40, 8-36, 10-32, 12-28

Model HU-12590 holds the following U.S. tap sizes:

4-40NC, 6-32NC, 8-32NC, 10-24NC, 10-32NF, 1/4"-20NC, 5/16"-18NC, 3/8"-16NC, 1/2"-13NC, 5/8"-11NC

or the following 10 METRIC tap sizes:

16X2.0, 12X1.75, 10X1.5, 8X1.25, 6X1.0, 5X.8, 4.5X.75, 4X7, 3.5X.6, 3X.5

Dimensions: (All Models)

3 1/4"W x 4 1/2"D x 1"H



Description	Part Number	Price
19 piece tap index	HU-12550	\$15.30
10 piece tap index	HU-12575	\$15.30
10 piece tap index	HU-12590	\$18.70

TAP & DRILL INDEXES

Organizes 9 pieces of plug taps with the 9 correct jobber length drill bits.



Dimensions:

Models HU-12600/ HU-12650/HU-12675:

4"W x 7"D x 1 1/4"H

Model HU-12700:

12 13/16"W x 4 1/8"D x 1 7/32"H



Description	Part Number	Price
NC6-32 #6 to 1/2"-13 #27/64 tap and drill index	HU-12600	\$11.05
NF6-40 #33 to 1/2"-20 #29/64 tap and drill index	HU-12650	\$11.90
Metric 2.5mm x 0.45, 2.05 to 12.0mm x 1.75 10.20mm tap and drill index	HU-12675	\$12.75
NC and NF taps and drills in one index	HU-12700	\$40.80

BIT BUDDY®

- Clip-on cup drill index
- High impact, break resistant plastic
- Water resistant, great for outdoor job sites
- Fast, 1/4 turn cover secures dome to top of Bit Buddy
- Drills stay in Bit Buddy if dropped and cover is on
- If your 1/2" drill bit is 6" OAL, order Jobbers Length Bit Buddy (HU-30550).



Description	Part Number	Price
For Jobbers-1/16" to 1/2" x 64ths	HU-30550	\$14.45
For Mechanics drills-1/16" to 1/2" x 64ths	HU-30650	\$14.45

TOOLBOX DRAWER LINERS

- Non-slip
- Protect your tool chest drawers and valuable tools
- Color: black
- Available in 2 sizes



Dimensions	Color	Part Number	Price
22.50" W x 115" L	Black	WO-SP-LINER23BK	\$19.22
16.50" W x 156.80" L	Black	WO-SP-LINER17BK	\$29.20

WEBBING

Protect your tools!

Woven of tough, flexible and stretchable polyethylene, this webbing provides great protection for delicate edges of cutting tools. More than doubles the storage capacity of any drawer. Reusable-slips on and off easily, with elasticity assuring a snug fit and non-slip grip. This inexpensive protection is easily cut to any length.



Size	Length	Part Number	Price Each
1/4" to 1" dia. tools	50 ft.	HU-14025	\$40.00
1/4" to 1/2" dia. tools	100 ft.	HU-14026	\$40.00
1/2" to 1" dia. tools	100 ft.	HU-14027	\$40.00
1" to 1-1/2" dia. tools	50 ft.	HU-14028	\$40.00

CUFFED WORK GLOVES LEATHER PALM



- Standard shoulder leather
- Gunn pattern
- 2-1/2" safety cuff
- Patch palm
- Full leather index finger and finger tips
- Color: Gray palm with blue denim
- Sold per pair

Description	Size	Part Number	1-11	12+
Denim Work Gloves	Large	GLV-1176PPB	\$1.79	\$1.49

PREMIUM GRAIN GOAT SKIN "PRO-MECH" GLOVES



- Designed for the professional mechanic or sports enthusiast
- Reinforced palm and thumb crotch
- Black spandex back and wrist
- Adjustable Velcro closure
- Keystone thumb
- Color: Gray with black trim
- Sold per pair

Description	Size	Part Number	1-11	12+
Goat Skin Mechanic Glove	Large	GLV-M4017-L	\$9.29	\$8.59
	X-Large	GLV-M4017-X	\$9.29	\$8.59

Call Us Or Visit Our Website For Our Complete Selection!

LATHE CHUCKS
LIVE CENTERS

VICE JAWS
VICE ACCESSORIES

STRAIGHT SHANK
COLLET HOLDERS

TAP HOLDERS
DRILL CHUCKS

CARBIDE INSERTS
THREADING/GROOVING

CUTTING TOOLS
MACHINERY

PRECISION TOOLS
DEBURRING

COOLANT/FLUIDS
TOOL STORAGE